



Cameleon bv
Schijfstraat 7
5061KA Oisterwijk
Netherlands
Tel: +31 (0) 13-8899073
www.cameleonpaint.com
Skype: cameleonpaint
KVK 54857686
VAT: 851467301B01

Cameleon Face and Bodyart products are available in following sizes:

Base line:	10 gram / 0.33 oz
	32 grams / 1.13 oz
	45 grams
Metal line:	10 gram / 0.33 oz
	32 grams / 1.13 oz
Color Block	30 grams
Airline:	50 ml / 1.7 oz

Description of products: All products are Face and bodypaint products. Containers are plastic, Labels contain the ingredients for both EU and FDA Face Paint

HS/tarif code : 3304995000

Contains small parts that could cause a choking hazard. Avoid contact with fabrics. Remove with soap & water. Discontinue use if a rash develops. After washing some traces of color may remain for a short period of time. Paint contained in this package is hypo-allergenic & non toxic. Safe, when used as indicated.

Like most Make-up , dark colours on some people may leave a bit of residue on the skin for a few hours after washing . This also depends on the type of complexion of the person.

The data presented in this "material data safety sheet" represents the safety information on each component of our products. The components are a final commodity, easy on the skin, & wash off with soap & water.

Our ingredients meets cosmetic guidelines both in the United States & the European Community & is designed to be used on children under the age of 3 years old & adults.

BSE free / CMR certificate / free of animal testing we herewith confirm that our products listed here are

A. Free of any animal origin ingredients and BSE free

B. Not tested on animals

C. Does not contain any ingredients listed in the CMR category 1, 2 or 3

Article 4b of the Cosmetics Directive, prohibits the use in cosmetic products of substances

CMR Category 1, 2 and 3 classified in the Annex I of the Council Directive 67/548/EEC.



Material Safety Data Sheet				Msds									
						Date Of Printing: Dec. 10Th 2013							
1 Chemical Product And Company Idendification													
Description:		Face & Body Paints, Regular And Metal Colours Soluble In Water.											
Product Type:		Paste Cake Type Paints											
Application:		Colorful On Body And Face											
Manufacturer/Suplier Lnformation													
Msds Prepared By:													
Company Name		Cameleon Bv											
Company Address		Schijfstraat 7, 5061Ka Oisterwijk, Netherlands											
		Tel: 31(0)138899073											
Emergency Information		Tel: 31(0)138899073											
Poison Control Center		Tel: 31(0)138899073											
Tel:		Tel: 31(0)138899073											
2 Composition, Information On Ingredients													
Paints Formulation With Wax, Petrolatum, Glycerin, Calcium Carbonate, Stearyl Alcohol,													
Sodium Bensozate,Acacia Senegel, Dextrin, Water And Pigments.													
Contains No Hazardous Ingredients.													
3 Hazards Identification													
3.1 Emergency Overview													
Appearance		Solid											
Odor		N/a											
Not A Health Hazard.													
Not A Significant Fire Hazard													
Hmis Rating		4 = Severe											
		3 = Serious											
Health		0 2 = Moderate											
Flammability		0 1 = Slight											
Reactivity		0 0 = Minimal											
3.2 Potential Health Effects													
Immediate Hazards													
Ingestion:		No Hazards Known											
If Inhaled:		No Hazards Known											
Skin Contact:		No Hazards Known											
Eye Contact:		No Hazards Known											
Delayed Hazards													
No Hazards Known													
4. First Aid Measures In Case Of:													
Ingestion:		Drink Plenty Of Water.											
		Get Medical Attention If Any Discomfort Continues											
Eye Contact:		Immediately Flush Eyes With Plenty Of Clean Water,											
		Take It Off From Eye.											
Skin Contact:		Wash With Soap And Water.											
If Inhaled:		Not Relevant.											

5. Fire Fighting Measures									
Autoignition Temperature						Not Available			
Upper/Lower Flammable Limits						Not Available			
Upper/Lower Explosive Limits						Not Available			
Flash Point						>150°C			
Will Not Burn Unless						> 250°C			
Suitable Extinguishing Media: Carbon Dioxide, Powders, Water Spray									
6. Accidental Release Measures									
Protective Measures									
Personal; Children Under 6 Years Should Use With Adult Supervision.									
7. Handling And Storage									
7.1 Handling									
Handle In Accordance With Good Industrial Hygiene And Safety Practices.									
7.2 Storage									
Store In Dry Place dry and Dark									
Keep in original container.									
8. Exposure Controls/Personal Protection									
8.1 Exposure Controls									
No Special Control Measures Necessary Under Normal Conditions Of Use.									
8.2 Personal Protection									
No Special Protection Necessary.									
8.3 Exposure Guidelines									
None Established.									
Hygiene Requirements									
Do Not Eat, Drink Or Smoke While Working. Remove Soiled Or Soaked Clothing Immediately.									
9. Physical And Chemical Properties									
Percent Volatiles						<1.5% Water			
Ph @ 20°C						----			
Specific Gravity						1.70±0.30G/ML			
Appearance						Colors Solid			
Autoignition Temperature						Not Available			
Melting Point						>250°C			
Vapor Density (Air=1)						-----			
Vapor Pressure Hpa @20°C						N/A Kg/Cm			
Evaporation Rate (Butyl Acetate=1)						Not Available			
Upper/Lower/Explosive Limits, % By Vol						Not Applicable			
Upper/Lower Flammable Limits						Not Applicable			
Flash Point						>150°C			
Freezing Point						----			
Odor						Not Available			
Odor Threshold. Ppm						Not Available			
Solubility In Water						Soluble			
Coefficient Of Water/Oil Distribution						Not Available			
10. Stability And Reactivity									
						Normally Stable			
Conditions To Avoid:						Exposure in water or too wet			

Item name: Aquacolor make-up(face & body) paints,		
Country of Original: China & Taiwan		
Composition of the products:		
BASE INGREDIENTS		
Paraffin	8002-74-2	20%
Petrolatum	8009-03-8	18%
Glycerin	56-81-5	10%
Calcium Carbonate	471-34-1	23,8%
	1317-65-3	
Stearyl Alcohol	112-92-5	4,4%
Phenoxyethanol	122-99-6	0,36%
Ethylhexylglycerin	70445-33-9	0,04%
Disodium EDTA	139-33-3	0,2%
Sodium Benzoate	532-32-1	0,2%
Acacia Senegal	9000-01-5	0,8%
Dextrin	9004-53-9	14,2%
Water		1%
Pigment		7%



Cameleon bv
 Schijfstraat 7
 5061KA Oisterwijk
 Netherlands

netmerianus

Tel: +31 (0) 13-8899073

www.cameleonpaint.com

Skype: cameleonpaint

KVK 54857686

VAT: 851467301B01

BASE LINE				
SKU	Name	FDA Name	CI/NO	Pigments
BL001	Fire red	D&C Red 7 CA Lake	15850:1	Red 5034
		D&C Yellow 6 Alum Lake	15985:1	Yellow 7009
BL002	Red Berry	D&C Red 6 NA Salt	15850	Red 6619
		D&C Red 7 CA Lake	15850:1	Red 30502
BL003	Blood Red	D&C Red 6 NA Salt	15850	Red 6619
		D&C Yellow 6 Alum Lake	15985:1	Yellow 7009
		D&C Red 7 CA Lake	15850:1	Red 30502
BL004	Banana Yellow	Titanium Dioxide	77891	TiO2
		FD&C Yellow 5 Alum Lake	19140:1	Yellow 09605
BL005	Midnight Blue	Titanium Dioxide	77891	TiO2
		Ultramarine blue	77007	Blue 302
		Ferric Ferrocyanide	77510	Blue 301C
		D&C Red 7 CA Lake	15850:1	Red 30502
BL006	Orange juice	Titanium Dioxide	77891	TiO2
		D&C Yellow 6 Alum Lake	15985:1	Yellow 7009
BL007	Sea Blue	Titanium Dioxide	77891	TiO2
		Ultramarine blue	77007	Blue 302
		Ultramarine blue	77007	Blue 5008
BL008	Frog green	Titanium Dioxide	77891	TiO2
		FD&C Yellow 5 Alum Lake	19140:1	Yellow 09605
		Ferric Ferrocyanide	77510	Blue 301C
		FD&C Blue 1 Alum Lake	42090:1	Blue 09903
		D&C Yellow 10 Alum Lake	47005:1	Yellow 7181
BL009	Clover Green	Titanium Dioxide	77891	TiO2
		FD&C Blue 1 Alum Lake	42090:1	Blue 09903
		Ferric Ferrocyanide	77510	Blue 301C
		D&C Yellow 10 Alum Lake	47005:1	Yellow 7181
BL0010	Teal	Titanium Dioxide	77891	TiO2
		FD&C Yellow 5 Alum Lake	19140:1	Yellow 09605
		D&C Yellow 10 Alum Lake	47005:1	Yellow 7181
		FD&C Blue 1 Alum Lake	42090:1	Blue 09903
BL0011	Purple Poison	Titanium Dioxide	77891	AFDC
		D&C Red 7 CA Lake	15850:1	Red 30502
		Ferric Ferrocyanide	77510	Blue 301C

		Manganese violet	77742	Violet 303A
		Ultramarine blue	77007	Blue 302
BL0012	Coffee Brown	Red Iron Oxide	77491	Red 5898AP
		Yellow Iron Oxide	77492	Yellow 1750
		Black Iron Oxide	77499	BK5000AP
BL0013	Strong Black	D&C Black 2	77266	LC902
BL0014	Black Velvet	Iron Oxide	77499	BK5000AP
BL0015	Pure White	Titanium Dioxide	77891	TiO2
BL0016	Cotton Candy	Titanium Dioxide	77891	TiO2
		D&C Red 7 CA Lake	15850:1	Red 30502
BL0017	Marshmallow	Titanium Dioxide	77891	TiO2
		D&C Red 7 CA Lake	15850:1	Red 30502
		D&C Red 6 NA Salt	15850:2	Red 7096
BL0018	Wicked Green	Titanium Dioxide	77891	TiO2
		D&C Yellow 10 Alum Lake	47005:1	Yellow 7181
		FD&C Yellow 5 Alum Lake	19140:1	Yellow 09605
		FD&C Blue 1 Alum Lake	42090:1	Blue 09903
BL0019	Robins Egg	Titanium Dioxide	77891	TiO2
		FD&C Blue 1 Alum Lake	42090:1	Blue 09903
		Ferric Ferrocyanide	77510	Blue 301C
BL0020	Absinthe	Titanium Dioxide	77891	AFDC
		D&C Yellow 10 Alum Lake	47005:1	Yellow 7181
		FD&C Yellow 5 Alum Lake	19140:1	Yellow 09605
		FD&C Blue 1 Alum Lake	42090:1	Blue 09903
BL0021	Celadon	Titanium Dioxide	77891	AFDC
		D&C Yellow 10 Alum Lake	47005:1	Yellow 7181
		FD&C Blue 1 Alum Lake	42090:1	Blue 09903
BL0022	Macchiato	Titanium Dioxide	77891	AFDC
		Yellow Iron Oxide	77492	Yellow 1750
		Red Iron oxide	77491	Red 2899AP
BL0023	Almond	Titanium Dioxide	77891	AFDC
		Yellow Iron Oxide	77492	Yellow 1750
BL0024	Espresso	Red Iron Oxide	77491	Red 5898AP
		Yellow Iron Oxide	77492	Yellow 1750
		Black Iron Oxide	77499	BK5000AP

BL0025	50	Titanium Dioxide	77891	TiO2
		D&C Black 2	77266	LC902
		Titanium Dioxide	77891	AFDC
		D&C Red 7 CA Lake	15850:1	Red 30502
		Ferric Ferrocyanide	77510	Blue 301C
		Manganese violet	77742	Violet 303A
		Ultramarine blue	77007	Blue 302
Conforms to ASTM D-4236, EN-71, EU76/768/EEC and FDA.				



Cameleon bv
 Schijfstraat 7
 5061KA Oisterwijk
 Netherlands
 Tel: +31 (0) 13-8899073
www.cameleonpaint.com
 Skype: cameleonpaint
 KVK 54857686
 VAT: 851467301B01

METAL LINE				
SKU	Name	FDA Name	CI/NO	Pigments
ML001	Gothic Black	Mica	77019	Mica 1000
		Mica	77019	GP100 Mica
		Iron Oxide	77499	BK5000AP
ML002	Chrystal white	Mica	77019	GP105 Mica
		Titanium Dioxide	77891	TiO2
ML003	Shocking Pink	D&C Red 7 CA Lake	15850:1	Red 30502
		D&C Red 6 NA Salt	15850	Red 6619
		D&C Yellow 6 Alum Lake	15985:1	Yellow 7009
		FD&C Yellow 5 Alum Lake	19140:1	Yellow 09605
ML004	Steam Punk	Fe2O3	77491	GP553 Fe2O3
		Mica	77019	GP500 Mica
ML005	Oscar Gold	Mica	77019	GP300 Mica
		Titanium Dioxide	77891	TiO2
		Fe2O3	77491	Fe2O3
ML006	Sterling Silver	Mica	77019	GP125 Mica
		Titanium Dioxide	77891	TiO2
		Mica	77019	GP105 Mica
		Titanium Dioxide	77891	TiO2
		Mica	77019	UT-19013 Mica
		Titanium Dioxide	77891	Titanium dioxide
		D&C Black 2	77266	LC902
ML007	Purple Heart	Mica	77019	GP105 Mica
		Mica	77019	GP220 Mica
		Mica	77019	Mica 1000
		D&C Red 7 CA Lake	15850:1	Red 30502
		Ferric Ferrocyanide	77510	Blue 301C

SL001	Capulete
SL002	Magic stars
Conforms to ASTM D-4236, EN-71, EU76/7	

ML008	Thistle	Mica	77019	GP100 Mica
		D&C Red 7 CA Lake	15850:1	Red 30502
		Ferric Ferrocyanide	77510	Blue 301C
ML009	Rose Sugar	Mica	77019	GP504 Mica
		Mica	77019	GP220 Mica
		Mica	77019	N8000S Mica
		Ferric Ferrocyanide	77510	Blue 301C
		D&C Red 7 CA Lake	15850:1	Red 30502
ML010	Plum Fairy	Mica	77019	GP504 Mica
		Mica	77019	GP220 Mica
		Ferric Ferrocyanide	77510	Blue 301C
		D&C Red 7 CA Lake	15850:1	Red 30502
ML0011	Fleur de Lise	Mica	77019	GP330 Mica
		Mica	77019	GP311 Mica
		Pigment Green 17	77288	Green 6099HP
		Ferric Ferrocyanide	77510	Blue 301C
ML0012	Victoriouse	GP100 Mica	12001-26-2	77019
		TiO2	13463-67-7	77891
		Blue 301C	25869-00-5	77510
Conforms to ASTM D-4236, EN-71, EU76/768/EEC and FDA.				

cameleon
professional body and facepaint make up

Cameleon bv
Schijfstraat 7
5061KA Oisterwijk
Netherlands
Tel: +31 (0) 13-8899073
www.cameleonnaint.com

www.cameleonpaint.com
Skype: cameleonpaint
KVK 54857686
VAT: 851467301B01

Mica	77019	GP105 Mica
Titanium Dioxide	77891	TiO2
Mica	77019	GP100 Mica
D&C Red 7 CA Lake	15850:1	Red 30502
Ferric Ferrocyanide	77510	Blue 301C
Mica	77019	GP105 Mica
Titanium Dioxide	77891	TiO2
Mica	77019	GP100 Mica
Ferric Ferrocyanide	77510	Blue 301C
68/EEC and FDA.		

Special FX UV line			
SKU	Name	FDA Name	CI/NO CAS
Foxy	neon orange	D&C ORANGE NO. 5	596-03-2
		Calcium Carbonate	471-34-1
		Acacia Senegal Gum	1/5/00
		Glycerin	56-81-5
		Water	7732-18-5
		Methylparaben	99-76-3
Flamingo Pink	neon pink	D&C Red No. 22	95917-83-2
		Calcium Carbonate	471-34-1
		Acacia Senegal Gum	1/5/00
		Glycerin	56-81-5
		Water	7732-18-5
		Methylparaben	99-76-3
Toxic Yellow	neon yellow	D&C YELLOW NO. 7	2321-07-5
		Calcium Carbonate	471-34-1
		Acacia Senegal Gum	1/5/00
		Glycerin	56-81-5
		Water	7732-18-5
		Methylparaben	99-76-3
Kryptonite	neon green	D&C Yellow 7	16,00%
		FD&C Blue 1	9,00%
		Calcium Carbonate	30,00%
		Acacia Senegal Gum	16,00%
		Glycerin	16,00%
		Water	12,99%
		Methylparaben	0,01%
Conforms to ASTM D-4236, EN-71, EU76/768/EEC and FDA.			
For Special FX only, not for cosmetic use!			

COLOR BLOCK				
SKU	Name	FDA	CI/NO	Pigments
CB001	Roses	D&C Red 6 NA Salt	15850	Red 6619
		D&C Yellow 6 Alum Lake	15985:1	Yellow 7009
		D&C Red 7 CA Lake	15850:1	Red 30502
		D&C Red 7 CA Lake	15850:1	Red 5034
		D&C Yellow 6 Alum Lake	15985:1	Yellow 7009
		Titanium Dioxide	77891	TiO2
		D&C Red 6 NA Salt	15850:2	Red 7096
		FD&C Yellow 5 Alum Lake	19140:1	Yellow 09605
CB003	Jellyfish	Titanium Dioxide	77891	TiO2
		Ultramarine blue	77007	Blue 302
		Ferric Ferrocyanide	77510	Blue 301C
		D&C Red 7 CA Lake	15850:1	Red 30502
		D&C Red 6 NA Salt	15850:2	Red 7096
		Mica	77019	GP125 Mica
		Mica	77019	GP105 Mica
		Mica	77019	UT-19013 Mica
		D&C Black 2	77266	LC902
CB004	Snow Flake	Titanium Dioxide	77891	TiO2
		Ultramarine blue	77007	Blue 302
		Ferric Ferrocyanide	77510	Blue 301C
		D&C Red 7 CA Lake	15850:1	Red 30502
		Ultramarine blue	77007	Blue 302
		Ultramarine blue	77007	Blue 5008
		Mica	77019	GP125 Mica
		Mica	77019	GP105 Mica
		Mica	77019	UT-19013 Mica
		D&C Black 2	77266	LC902
		FD&C Blue 1 Alum Lake	42090:1	Blue 09903
		Ferric Ferrocyanide	77510	Blue 301C
CB005	Fresh grass	Titanium Dioxide	77891	TiO2
		FD&C Blue 1 Alum Lake	42090:1	Blue 09903
		Ferric Ferrocyanide	77510	Blue 301C
		D&C Yellow 10 Alum Lake	47005:1	Yellow 7181
		FD&C Yellow 5 Alum Lake	19140:1	Yellow 09605
		Ferric Ferrocyanide	77510	Blue 301C
		FD&C Blue 1 Alum Lake	42090:1	Blue 09903
		D&C Yellow 10 Alum Lake	47005:1	Yellow 7181
		FD&C Yellow 5 Alum Lake	19140:1	Yellow 09605
CB006	Shamrock	Titanium Dioxide	77891	TiO2
		Ultramarine blue	77007	Blue 302
		Ferric Ferrocyanide	77510	Blue 301C
		D&C Red 7 CA Lake	15850:1	Red 30502
		FD&C Blue 1 Alum Lake	42090:1	Blue 09903
		Ferric Ferrocyanide	77510	Blue 301C
		D&C Yellow 10 Alum Lake	47005:1	Yellow 7181
		D&C Yellow 10 Alum Lake	47005:1	Yellow 7181
		FD&C Yellow 5 Alum Lake	19140:1	Yellow 09605

		FD&C Blue 1 Alum Lake	42090:1	Blue 09903
		Mica	77019	GP300 Mica
		Fe2O3	77491	Fe2O3
		FD&C Yellow 5 Alum Lake	19140:1	Yellow 09605
CB009	Swan	D&C Black 2	77266	LC902
		Mica	77019	GP125 Mica
		Titanium Dioxide	77891	TiO2
		Mica	77019	GP105 Mica
		Mica	77019	UT-19013 Mica
		D&C Black 2	77266	LC902
		Mica	77019	GP105 Mica
CB0011	Rainbow WOW	Titanium Dioxide	77891	TiO2
		FD&C Blue 1 Alum Lake	42090:1	Blue 09903
		Ferric Ferrocyanide	77510	Blue 301C
		D&C Yellow 10 Alum Lake	47005:1	Yellow 7181
		FD&C Yellow 5 Alum Lake	19140:1	Yellow 09605
		FD&C Blue 1 Alum Lake	42090:1	Blue 09903
		FD&C Yellow 5 Alum Lake	19140:1	Yellow 09605
		D&C Yellow 6 Alum Lake	15985:1	Yellow 7009
		D&C Red 6 NA Salt	15850	Red 6619
		D&C Red 7 CA Lake	15850:1	Red 30502
CB0012	Poppy	Titanium Dioxide	77891	TiO2
		D&C Red 6 NA Salt	15850	Red 6619
		D&C Red 7 CA Lake	15850:1	Red 30502
		Mica	77019	GP300 Mica
		Fe2O3	77491	Fe2O3
		Mica	77019	Mica 1000
		Mica	77019	GP100 Mica
		CI Pigment Black 11	77499	BK5000AP
CB0013	Soul Fire	Titanium Dioxide	77891	TiO2
		Ultramarine blue	77007	Blue 302
		Ultramarine blue	77007	Blue 5008
		FD&C Yellow 5 Alum Lake	19140:1	Yellow 09605
		D&C Yellow 6 Alum Lake	15985:1	Yellow 7009
		D&C Red 6 NA Salt	15850	Red 6619
		D&C Red 7 CA Lake	15850:1	Red 30502
		Iron Oxide	77499	BK5000AP
CB0014	Princess Bride	Titanium Dioxide	77891	TiO2
		Mica	77019	GP105 Mica
		D&C Red 7 CA Lake	15850:1	Red 30502
		Ferric Ferrocyanide	77510	Blue 301C
		Manganese violet	77742	Violet 303A
		Ultramarine blue	77007	Blue 302
		Mica	77019	GP300 Mica
		Fe2O3	77491	Fe2O3
		Titanium Dioxide	77891	TiO2

CB015	Sunset	Ultramarine blue	77007	Blue 302
		Ferric Ferrocyanide	77510	Blue 301C
		D&C Red 7 CA Lake	15850:1	Red 30502
		FD&C Blue 1 Alum Lake	42090:1	Blue 09903
		Ferric Ferrocyanide	77510	Blue 301C
		Mica	77019	GP300 Mica
		Fe2O3	77491	Fe2O3
CB0017	Michele magic 2	D&C Red 7 CA Lake	15850:1	Red 5034
		D&C Yellow 6 Alum Lake	15985:1	Yellow 7009
		Titanium Dioxide	77891	TiO2
		FD&C Yellow 5 Alum Lake	19140:1	Yellow 09605
		D&C Yellow 10 Alum Lake	47005:1	Yellow 7181
		FD&C Yellow 5 Alum Lake	19140:1	Yellow 09605
		FD&C Blue 1 Alum Lake	42090:1	Blue 09903
		FD&C Blue 1 Alum Lake	42090:1	Blue 09903
		Ferric Ferrocyanide	77510	Blue 301C
		D&C Red 7 CA Lake	15850:1	Red 30502
		Ferric Ferrocyanide	77510	Blue 301C
		Manganese violet	77742	Violet 303A
		Ultramarine blue	77007	Blue 302
CB0018	Jelly Bean	Titanium Dioxide	77891	TiO2
		D&C Red 7 CA Lake	15850:1	Red 30502
		D&C Red 6 NA Salt	15850:2	Red 7096
		Titanium Dioxide	77891	TiO2
		FD&C Yellow 5 Alum Lake	19140:1	Yellow 09605
		D&C Yellow 10 Alum Lake	47005:1	Yellow 7181
		FD&C Yellow 5 Alum Lake	19140:1	Yellow 09605
		FD&C Blue 1 Alum Lake	42090:1	Blue 09903
		FD&C Blue 1 Alum Lake	42090:1	Blue 09903
		Ferric Ferrocyanide	77510	Blue 301C
CB0019	Fairy Dust	Titanium Dioxide	77891	AFDC
		Ferric Ferrocyanide	77510	Blue 301C
		Manganese violet	77742	Violet 303A
		Ultramarine blue	77007	Blue 302
		D&C Red 7 CA Lake	15850:1	Red 30502
		D&C Red 6 NA Salt	15850:2	Red 7096
		D&C Yellow 6 Alum Lake	15985:1	Yellow 7009
CB0020	Venus	Mica	77019	GP330 Mica
		Mica	77019	GP311 Mica
		Pigment Green 17	77288	Green 6099HP
		Ferric Ferrocyanide	77510	Blue 301C
		Mica	77019	GP300 Mica
		Titanium Dioxide	77891	TiO2
		Fe2O3	77491	Fe2O3
		Mica	77019	GP504 Mica
		Mica	77019	GP220 Mica
		Mica	77019	N8000S Mica
		Ferric Ferrocyanide	77510	Blue 301C
		D&C Red 7 CA Lake	15850:1	Red 30502

		Mica	77019	GP504 Mica
		Mica	77019	GP220 Mica
		Ferric Ferrocyanide	77510	Blue 301C
CB0021	Olivia	D&C Red 6 NA Salt	15850	Red 6619
		D&C Yellow 6 Alum Lake	15985:1	Yellow 7009
		Titanium Dioxide	77891	TiO2
		D&C Red 7 CA Lake	15850:1	Red 30502
CB0022	Enli	Titanium Dioxide	77891	TiO2
		D&C Red 6 NA Salt	15850:2	Red 7096
		D&C Red 6 NA Salt	15850	Red 6619
		D&C Red 7 CA Lake	15850:1	Red 30502
CB0023	Evening	Titanium Dioxide	77891	TiO2
		FD&C Yellow 5 Alum Lake	19140:1	Yellow 09605
		FD&C Blue 1 Alum Lake	42090:1	Blue 09903
		Ferric Ferrocyanide	77510	Blue 301C
		D&C Yellow 10 Alum Lake	47005:1	Yellow 7181
		AFDC	77891	Titanium Dioxide
		D&C Red 7 CA Lake	15850:1	Red 30502
		Blue 301C	77510	Ferric Ferrocyanide
		Violet 303A	77742	Manganese violet
		Blue 302	77007	Ultramarine blue
		FD&C Yellow 5 Alum Lake	19140:1	Yellow 09605
		Ferric Ferrocyanide	77510	Blue 301C
		FD&C Blue 1 Alum Lake	42090	Blue 09903
		D&C Yellow 10 Alum Lake	47005:1	Yellow 7181
CB0024	Siren	Ultramarine blue	77007	Blue 302
		Ultramarine blue	77007	Blue 5008
		FD&C Blue 1 Alum Lake	42090:1	Blue 09903
		Ferric Ferrocyanide	77510	Blue 301C
		D&C Yellow 10 Alum Lake	47005:1	Yellow 7181
		Titanium Dioxide	77891	AFDC
		D&C Yellow 10 Alum Lake	47005:1	Yellow 7181
		FD&C Blue 1 Alum Lake	42090:1	Blue 09903
		FD&C Yellow 5 Alum Lake	19140:1	Yellow 09605
		Ferric Ferrocyanide	77510	Blue 301C
CB0025	Paintopia	Titanium Dioxide	77891	TiO2
		FD&C Yellow 5 Alum Lake	19140:1	Yellow 09605
		D&C Yellow 6 Alum Lake	15985:1	Yellow 7009
		Red Iron Oxide	77491	Red 5898AP
		Yellow Iron Oxide	77492	Yellow 1750
		Black Iron Oxide	77499	BK5000AP
CB0026	Lovebird	D&C Black 2	77266	LC902
		D&C Red 6 NA Salt	15850	Red 6619
		D&C Yellow 6 Alum Lake	15985:1	Yellow 7009
		D&C Red 7 CA Lake	15850:1	Red 30502
		Titanium Dioxide	77891	TiO2

CB0027	Gypsy	Titanium Dioxide	77891	TiO2
		FD&C Blue 1 Alum Lake	42090:1	Blue 09903
		Ferric Ferrocyanide	77510	Blue 301C
		D&C Red 7 CA Lake	15850:1	Red 30502
		FD&C Yellow 5 Alum Lake	19140:1	Yellow 09605
CB0028	African Sunset By YC Art	Titanium Dioxide	77891	TiO2
		FD&C Yellow 6 Alum Lake	15985:1	Yellow 7009
		D&C Red 7 CA Lake	15850:1	Red 30502
		D&C Red 6 NA Salt	15850	Red 6619
CB0030	Retro	Titanium Dioxide	77891	TiO2
		FD&C Blue 1 Alum Lake	42090:1	Blue 09903
		Yellow Iron Oxide	77492	Yellow 1750
		Ferric Ferrocyanide	77510	Blue 301C
		Red Iron Oxide	77491	Red 5898AP
		Black Iron Oxide	77499	BK5000AP
CB0031	Punky Debz	Titanium Dioxide	77891	TiO2
		FD&C Yellow 5 Alum Lake	19140:1	Yellow 09605
		Titanium Dioxide	77891	AFDC
		D&C Yellow 10 Alum Lake	47005:1	Yellow 7181
		FD&C Yellow 5 Alum Lake	19140:1	Yellow 09605
		FD&C Blue 1 Alum Lake	42090:1	Blue 09903
		D&C Red 7 CA Lake	15850:1	Red 30502
		Ferric Ferrocyanide	77510	Blue 301C
		Manganese violet	77742	Violet 303A
		Ultramarine blue	77007	Blue 302
CB0032	Pansy	Titanium Dioxide	77891	TiO2
		Titanium Dioxide	77891	AFDC
		D&C Red 7 CA Lake	15850:1	Red 30502
		Ferric Ferrocyanide	77510	Blue 301C
		Manganese violet	77742	Violet 303A
		Ultramarine blue	77007	Blue 302
		FD&C Yellow 5 Alum Lake	19140:1	Yellow 09605
* Conforms to ASTM * Conforms to ASTM D-4236, EN-71, EU76/768/EEC and FDA.				
But need warning: not use around eyes and lips too long.				



Cameleon bv
 Schijfstraat 7
 5061KA Oisterwijk
 Netherlands
 Tel: +31 (0) 13-8899073
 www.cameleonpaint.com
 Skype: cameleonpaint
 KVK 54857686
 VAT: 851467301B01

Regular Colors			
Color	Ingredients	CAS No.	CI No.
Black / Raven	Iron Oxides	1332-37-2	77491
	Water	7732-18-5	
	Calcium Carbonate	471-34-1	
	Acacia Senegal Gum	1/5/00	
	Glycerin	56-81-5	
White / Snowwhite	Titanium Dioxide	13463-67-7	77891
	Water	7732-18-5	
	Calcium Carbonate	471-34-1	
	Acacia Senegal Gum	1/5/00	
	Glycerin	56-81-5	
	Talc	14807-96-6	
Yellow / Canary	FD&C Yellow No.5		
	Titanium Dioxide	13463-67-7	77891
	Water	7732-18-5	
	Calcium Carbonate	471-34-1	
	Acacia Senegal Gum	1/5/00	
	Glycerin	56-81-5	
Dark Blue / Prussian	Ultramarines		
	D&C Red No.7		
	Iron Oxides	1332-37-2	77491
	Water	7732-18-5	
	Calcium Carbonate	471-34-1	
	Acacia Senegal Gum	1/5/00	
	Glycerin	56-81-5	
Dark Green / Pine	Iron Oxides	1332-37-2	77491
	FD&C Blue No.1		
	FD&C Yellow No.5		
	Water	7732-18-5	
	Calcium Carbonate	471-34-1	
	Acacia Senegal Gum	1/5/00	
	Glycerin	56-81-5	
Dark Red / Red Devil	FD&C Red No.40		
	Water	7732-18-5	
	Acacia Senegal Gum	1/5/00	
	Glycerin	56-81-5	
	Talc	14807-96-6	
Pizzah / Purple	Ultramarines	1302-83-6	77007
	D&C Red No.7	4/9/81	15850
	Iron Oxides	1332-37-2	77491
	Talc	14807-96-6	
	Acacia Senegal Gum	1/5/00	
	Glycerin	56-81-5	
	Water	7732-18-5	
Baby Blue's Brother/ Light blue	FD&C Blue No.1	3844-45-9	42090
	Titanium Dioxide	13463-67-7	77891
	Talc	14807-96-6	
	Acacia Senegal Gum	1/5/00	
	Glycerin	56-81-5	
	Water	7732-18-5	



Cameleon bv
 Schijfstraat 7
 5061KA Oisterwijk
 Netherlands
 Tel: +31 (0) 13-8899073
 www.cameleonpaint.com
 Skype: cameleonpaint
 KVK 54857686
 VAT: 851467301B01

Metal Colors			
Color	Ingredients	CAS No.	CI No.
Midas Gold			
	Water	7732-18-5	
	Calcium Carbonate	471-34-1	
	Acacia Senegal Gum	1/5/00	
	Glycerin	56-81-5	
Cabaret Bling /rose			
	Water	7732-18-5	
	Calcium Carbonate	471-34-1	
	Acacia Senegal Gum	1/5/00	
	Glycerin	56-81-5	
UBPL Silver			
	Water	7732-18-5	
	Calcium Carbonate	471-34-1	
	Acacia Senegal Gum	1/5/00	
	Glycerin	56-81-5	
Jerricho Copper			
	Water	7732-18-5	
	Calcium Carbonate	471-34-1	
	Acacia Senegal Gum	1/5/00	
	Glycerin	56-81-5	

Metal Colors				
Color	Ingredients	CAS No.	CI No.	
Midas Gold				
	Water	7732-18-5		
	Calcium Carbonate	471-34-1		
	Acacia Senegal Gum	1/5/00		
	Glycerin	56-81-5		
Cabaret Bling /rose				
	Water	7732-18-5		
	Calcium Carbonate	471-34-1		
	Acacia Senegal Gum	1/5/00		
	Glycerin	56-81-5		
UBPL Silver				
	Water	7732-18-5		
	Calcium Carbonate	471-34-1		
	Acacia Senegal Gum	1/5/00		
	Glycerin	56-81-5		
Jerricho Copper				
	Water	7732-18-5		
	Calcium Carbonate	471-34-1		
	Acacia Senegal Gum	1/5/00		
	Glycerin	56-81-5		
Helena's Blue	Mica	12001-26-2	77019	
	Titanium Dioxide	13463-67-7	77891	
	Water	7732-18-5		
	Calcium Carbonate	471-34-1		
	Acacia Senegal Gum	9000-01-5		
	Glycerin	56-81-5		
	FD&C Blue No.1	3844-45-9	42090	



Cameleon bv
 Schijfstraat 7
 5061KA Oisterwijk
 Netherlands
 Tel: +31 (0) 13-8899073
 www.cameleonpaint.com
 Skype: cameleonpaint
 KVK 54857686
 VAT: 851467301B01

UV Colors			
Color	Ingredients	CAS No.	CI No.
Orange UV / Sun	Not for cosmetic use, only for special effects		
	D&C Orange 5	7732-18-5	
	Calcium Carbonate	471-34-1	
	Acacia Senegal Gum	1/5/00	
	Glycerin		
	Water		
	Methylparaben	56-81-5	
Magenta Pink UV	Not for cosmetic use, only for special effects		
	D&C Red 22	7732-18-5	
	Calcium Carbonate		
	Acacia Senegal Gum		
	Glycerin	471-34-1	
	Water	1/5/00	
	Methylparaben	56-81-5	
Green UV / UFO	Not for cosmetic use, only for special effects		
	Water	7732-18-5	
	Calcium Carbonate	471-34-1	
	Acacia Senegal Gum	1/5/00	
	Glycerin	56-81-5	
Sulfur yellow UV	Not for cosmetic use, only for special effects		
	D&C Yellow 7	7732-18-5	
	Calcium Carbonate		
	Acacia Senegal Gum		
	Glycerin	471-34-1	
	Water	1/5/00	
	Methylparaben	56-81-5	
Lili White UV	Not for cosmetic use, only for special effects		
	Water	7732-18-5	
	Calcium Carbonate	471-34-1	
	Acacia Senegal Gum	1/5/00	
	Glycerin	56-81-5	
Shocking Blue UV	Not for cosmetic use, only for special effects		
	Water	7732-18-5	
	Calcium Carbonate	471-34-1	
	Acacia Senegal Gum	1/5/00	
	Glycerin	56-81-5	



Cameleon bv
Schijfstraat 7
5061KA Oisterwijk

Netherlands
Tel: +31 (0) 13-8899073
www.cameleonpaint.com
Skype: cameleonpaint
KVK 54857686
VAT: 851467301B01

Scare Line Liquid			
Color	Ingredients	CAS No.	CI No.
Bones / light skin			
	Water	7732-18-5	
	Calcium Carbonate	471-34-1	
	Acacia Senegal Gum	1/5/00	
	Glycerin	56-81-5	
The Dark / dark brown			
	Water	7732-18-5	
	Calcium Carbonate	471-34-1	
	Acacia Senegal Gum	1/5/00	
	Glycerin	56-81-5	
Bile / green			
	Water	7732-18-5	
	Calcium Carbonate	471-34-1	
	Acacia Senegal Gum	1/5/00	
	Glycerin	56-81-5	
Rotten / Orange			
	Water	7732-18-5	
	Calcium Carbonate	471-34-1	
	Acacia Senegal Gum	1/5/00	
	Glycerin	56-81-5	
Variouse / blue			
	Water	7732-18-5	
	Calcium Carbonate	471-34-1	
	Acacia Senegal Gum	1/5/00	
	Glycerin	56-81-5	
Clothed Blood / red			
	Water	7732-18-5	
	Calcium Carbonate	471-34-1	
	Acacia Senegal Gum	1/5/00	
	Glycerin	56-81-5	



Cameleon bv
Pastoor de Beeckstraat 1
5051 TJ Goirle
Tel: +31 (0) 13-8899073
www.cameleonpaint.com
Skype: cameleonpaint
KVK 54857686
VAT: 851467301B01

Name	Size	Sort	use
Round	00	Synthetic	Lines
Round	02	Synthetic	Lines
Round	04	Synthetic	Lines
Round	06	Synthetic	Lines
FLat Buget	1"	Synthetic	Color Block
FLat Buget	¾"	Synthetic	Color Block
FLat Buget	½"	Synthetic	Color Block
Big Round	1	Synthetic	Petal Brush
Small Kabuki	1	Synthetic	Body and Face / perfect for base painting
Flat Cameleon	1"	Synthetic	Color Block/bodybrush
Flat Cameleon	¾"	Synthetic	Color Block face children
Flat Cameleon	½"	Synthetic	Color Block little strokes
Round Cameleon	0	Synthetic	Line work
Round Cameleon	2	Synthetic	Line work
Round Cameleon	4	Synthetic	Line work
Round Cameleon	6	Synthetic	Line work
Stipple Brush Sponge	1	Sponge/ Synthetic	Face/ flowers/ dots/ eyeshadow
YC Blending	1	Synthetic Chisle	Blending, cattongue
YC Blending	2	Synthetic Chisle	Blending, cattongue
Matteo	1	Synthetic	Blending / shading
Matteo	2	Synthetic	Blending / shading



Sodium Palmitate Sodium Cocoate
Aqua Glycerine Parfume (fresh lime fragrance) Sodium Chloride Sodium Hydroxide Tetrasodium
EdtaWeight: 100g PAO (36m) (also in 10 grams)

How to use:

Dip your brush into the brush soap.

Rub the brush soap into the bristles.
Rub the bristles in a circular, scrubbing motion in the palm of your free hand. (Very delicate)

Once you have worked the brush soap thoroughly through the bristles,
rinse the soap from the brush under warm, running water.
It may take more than one application of soap if there is a lot of paint in the brush.

Remove excess water with a towel and allow the brushes to dry before using them again. We advise, hanging your brushes to dry, or letting them dry on a clean towel.

SP001 lemon sorbet soap



SP003 lemon sorbet Foam soap

Aqua
Cocamide DEA
Sodium Laureth-11 Carboxylate
Glycerin
Parfum
Sodium Laureth Sulfate
propylene glycol
benzyl alcohol
methylchloroisothiazolinone
methylisothiazolinone
Disodium Lauriminodipropionate
Citral
Citronellol
Eugenol
Geraniol
Limonene
Linalool

MOIST ME Cameleon Waterless Makeup Remover is a lotion (in our famouse lemony sent) that requires no water for use, yet removes all types of makeup - creme makeup, water-based cake makeup and airbrush makeup, alcohol-based inks, and hybrids!

It will also remove latex and prosaide
Following removal, the skin is immediately ready to be painted again, with no irritation to the skin, and requiring no additional washing. Cameleon Waterless Makeup remover is gentle on the skin, but tough on makeup.
Facepainters, bodypainter and makeup artists will love MOIST ME Cameleon Waterless Makeup Remover for cleanup on the job where water may not be readily available. Models can remove makeup and be ready for a second look or be fresh and clean for home.
Haunted house, theatrical actors and other entertainers will also appreciate MOIST ME Cameleon Waterless Makeup Remover for a gentle alternate for easy removal of makeup when repetitive performances are required in a short period of time.
Available in 8 oz./250 ml MOIST ME Cameleon Waterless Makeup Remover is the one cleanup product you must have in your kit!"



baby compressor

Expanding horizons...

This DC Continuous Airflow "Single Action" Air Compressor is suitable for Water Based, Silicone based and Alcohol based makeup. Artist on all levels can enjoy flawless makeup application with this easy to use kit.

This kit comes complete with all the necessary accessories to get you started in the field of Airbrushing. What better way to get introduced into the airbrush industry! With it's sleek and clean design it's ready to pop in your kit, trolley or small hand bag. The airbrush gun offers continuous airflow "single action" with a "gravity feed cup" (top feed) which is easier and more efficient to use. You can replace the gun with any other brand you might like.

Have fun with the easy to use baby compressor kit. This product was specifically designed for Cameleon Face and Body Paint as an affordable and fun way to add Airbrush Makeup to your kit.



Specifications:

Voltage: DC 12v
Adapter: Intl 100v-240v included
Plugs: International
Sound and Vibration: minimal
Holder: Easy grip soft plastic
Port: Easy on/off soft plastic
Air Hose: 1.8 Meters (70.8 inches long USA)
Time: Designed for light to medium use
Air flow: 9L/min
Max Pressure: 25 psi
Working Pressure: 5 psi
AIRFLOW: 5-25 psi depending on makeup
Suitable to use with our Airline Products, with nozzle from 0.2/ 0.5 mm

We hope you enjoy your new Baby Compressor. Please keep in mind that this kit was specially made for the make-up, face and partial body artist in mind.

** This set is not intended for full body art.*

Live
life
DISCOVER
airline



baby compressor

Getting Started:

- Place your Baby Compressor in front of you.
- Take one end of the silicone hose and attach to the Airbrush.
- Next, connect the other end of the hose to the port on the Compressor.
- Insert the AC adapter into the underside of the air compressor.
- Plug in the AC adapter into a power outlet.

When all leftover makeup has been fully blown through the airbrush, detach the gun from the hose, and place the cup under running water to rinse thoroughly. Connect your gun again to the compressor, and run through your airbrush system to remove any makeup still there.

Maintenance and Cleaning:

NEVER use hot water to clean your airbrush gun because there are tiny plastic gaskets that may become warped and will destroy your gun. Use warm water. When all leftover makeup has been fully blown through the airbrush you can pour warm water into the cup and dump out several times.

Pour warm water into the cup and spray until clear onto a white paper towel.

While there is water in the cup, place your finger carefully but firmly over the nozzle and pull the trigger.

You will see bubbles.

This will clean out any residual color in the chamber of your airbrush gun.

Disconnect your gun and submerge the cup under running warm water to rinse thoroughly.

Reconnect and repeat until you have no residual color coming out.

You may also purchase airbrush cleaner.

Maintenance:

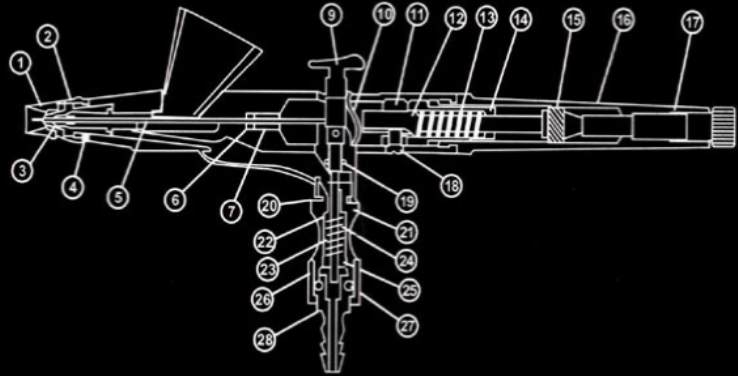
- Every few applications you will want to pull the needle out and wipe it clean.
- Your needle is a very important part of your airbrush gun so treat it very nice.
- Be careful not to bend the top of the needle
- Twist off the back end or “handle” of the brush.
- Unscrew, but do not remove, the “needle chucking nut”, (this is what holds the needle in place)
- Gently remove the needle.
- Clean it by pulling the needle over a paper towel or tissue that you have added a few drops of cleaning solution or water to.
- While the needle is separate from the airbrush, remove the needle cap and use a cotton swab (add 2 drops of water to the swab) to clean any residue on the edges of the cap. Build-up of product could obstruct or diminish the flow
- Gently replace the needle tapping the end to make certain it is properly inserted. Tighten the needle chucking nut
- Replace the handle. Your airbrush is clean and ready for use.

We hope you enjoy your new Baby Compressor.

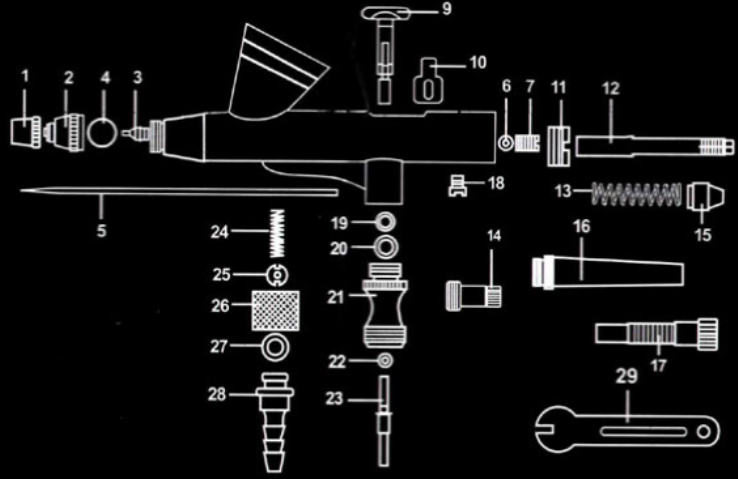
Please keep in mind that this kit was specially made for the make-up, face and partial body artist in mind.

This set is not intended for full body art.

AIRBRUSH MECHANISM



PARTS DETAIL



Parts Name

- 1 – Needle Cap
- 2 – Nozzle Cap
- 3 – Nozzle .2mm
- 4 – O-Ring for Nozzle Cap
- 5 – Needle .2mm
- 6 – O-Ring for Needle Guide
- 7 – Needle Guide
- 8 – Lid for Color Cup
- 9 – Trigger
- 10 – Secondary Lever Guide –
- 11 – Stopper
- 12 – Spring
- 13 – Needle Adj. Sleeve
- 14 – Needle Chucking Guide
- 15 – Needle Chucking Nut
- 16 – Standard Handle, Adjusting
- 17 – Needle Stop Adj. Screw
- 18 – Needle Guide Lock Screw
- 19 – Trigger Plunger O-Ring
- 20 – Valve Body O-Ring
- 21 – Valve Body
- 22 – Valve Rod O-Ring
- 23 – Valve Rod
- 24 – Valve Rod Spring
- 25 – Valve Rod Spring Retainer
- 26 – Hose Connector Nut
- 27 – O-Ring for Hose Connector
- 28 – Hose Connector Barb
- 29 – Nozzle Spanner